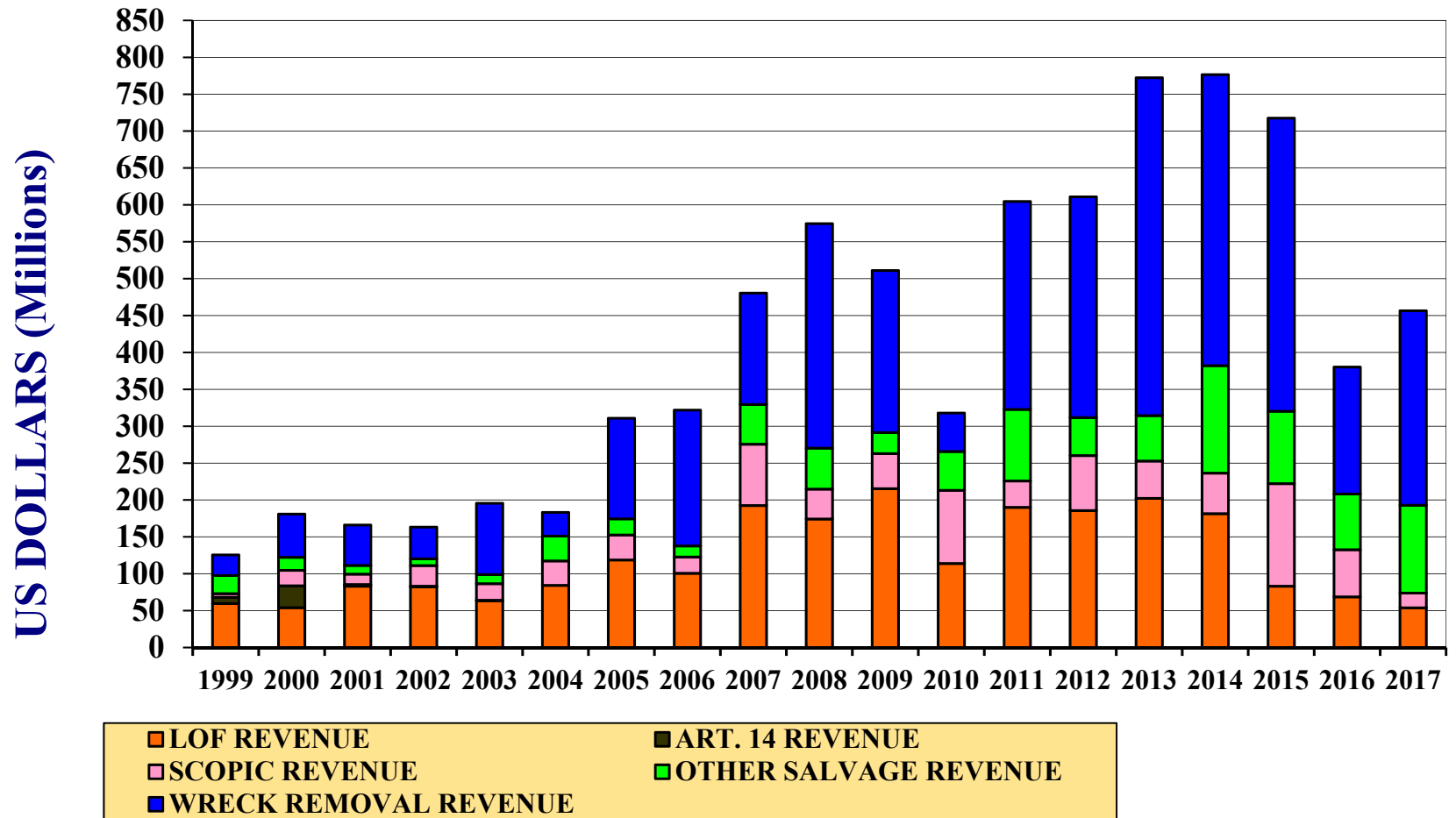
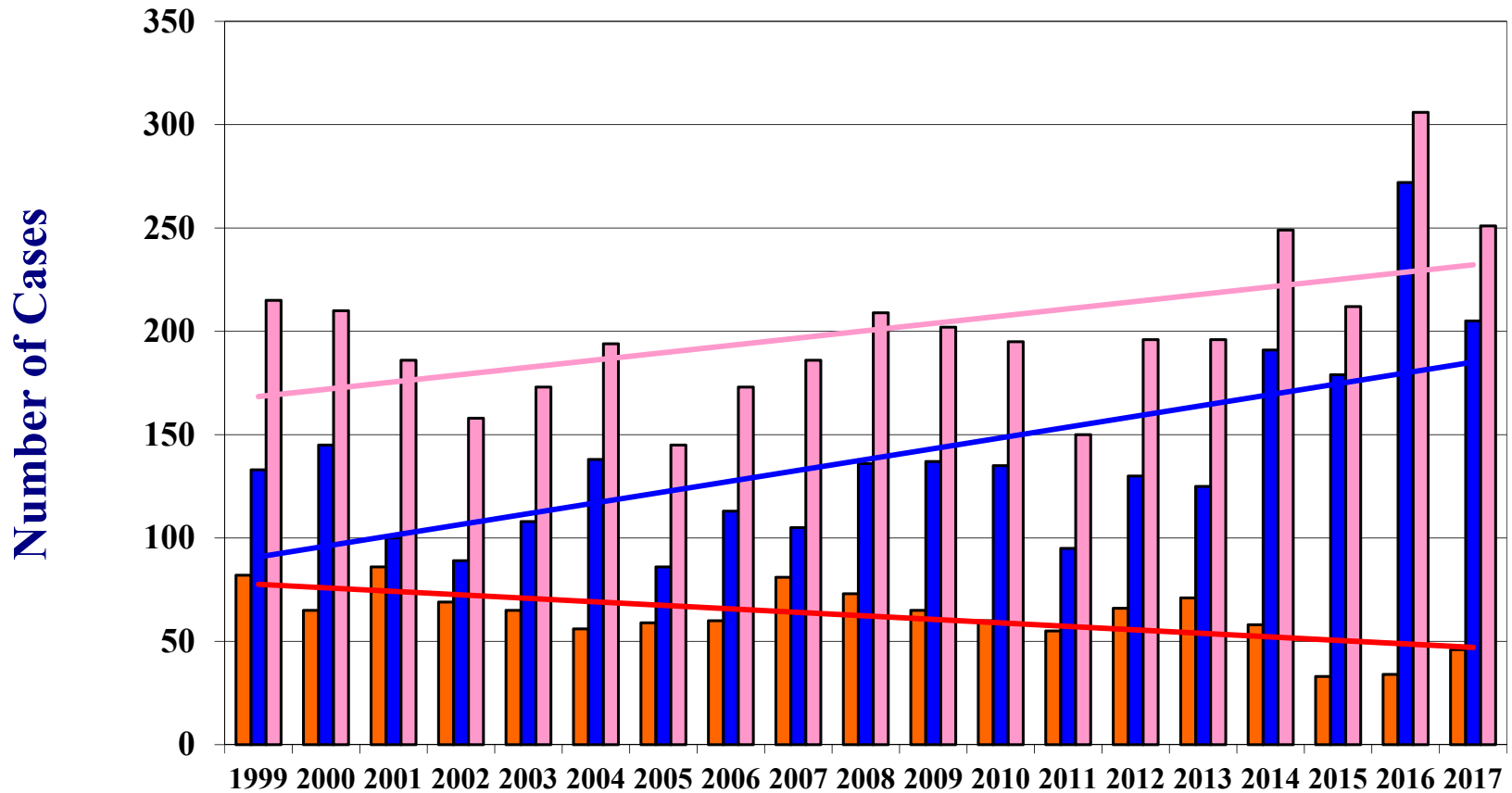


ISU Salvage Statistics; 1999 – 2017

All Sources of Revenue



Number of “Dry” Salvage Services per Year

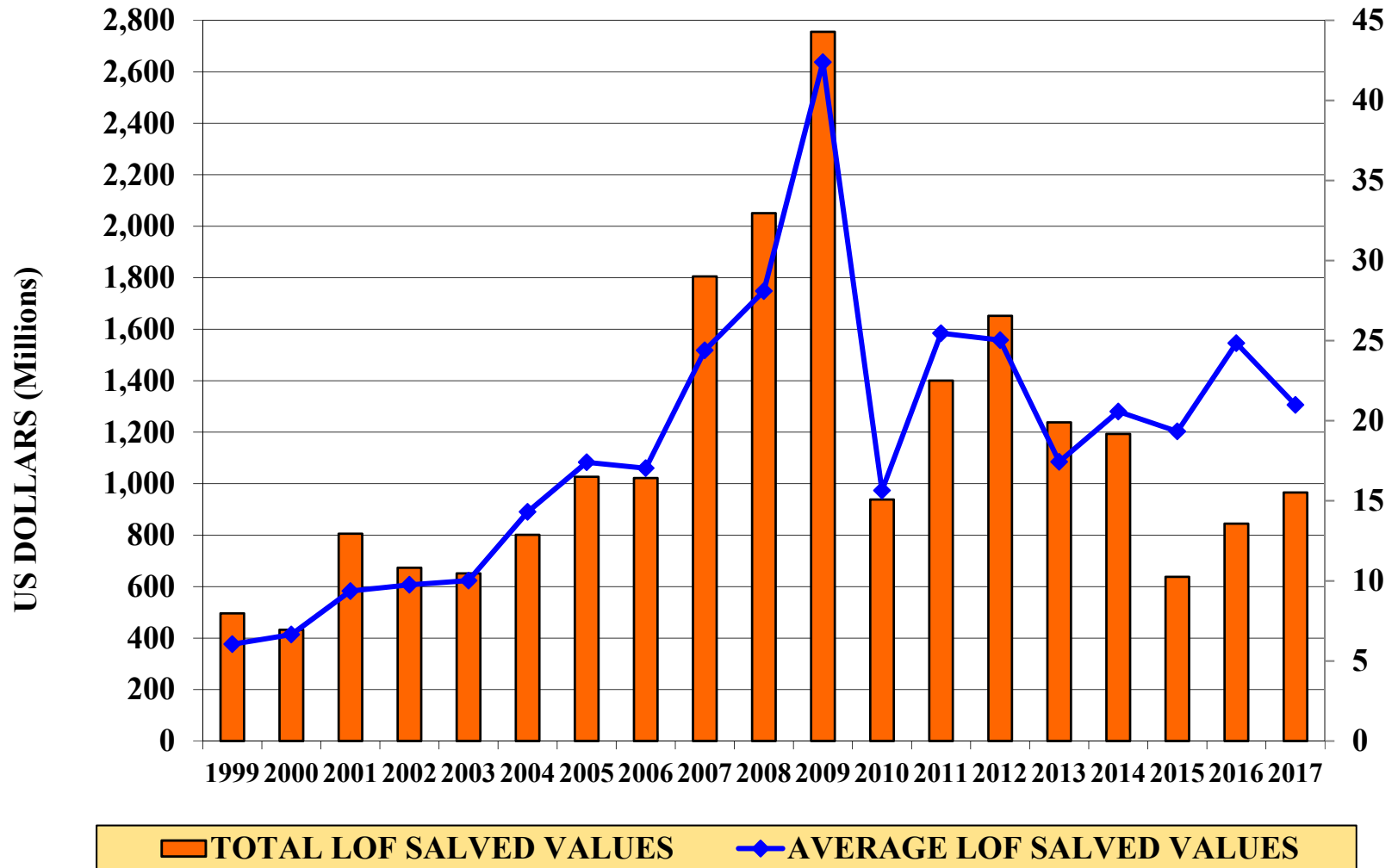


■ NO. LOF CASES ■ NO. NON LOF CASES ■ TOTAL NO. CASES



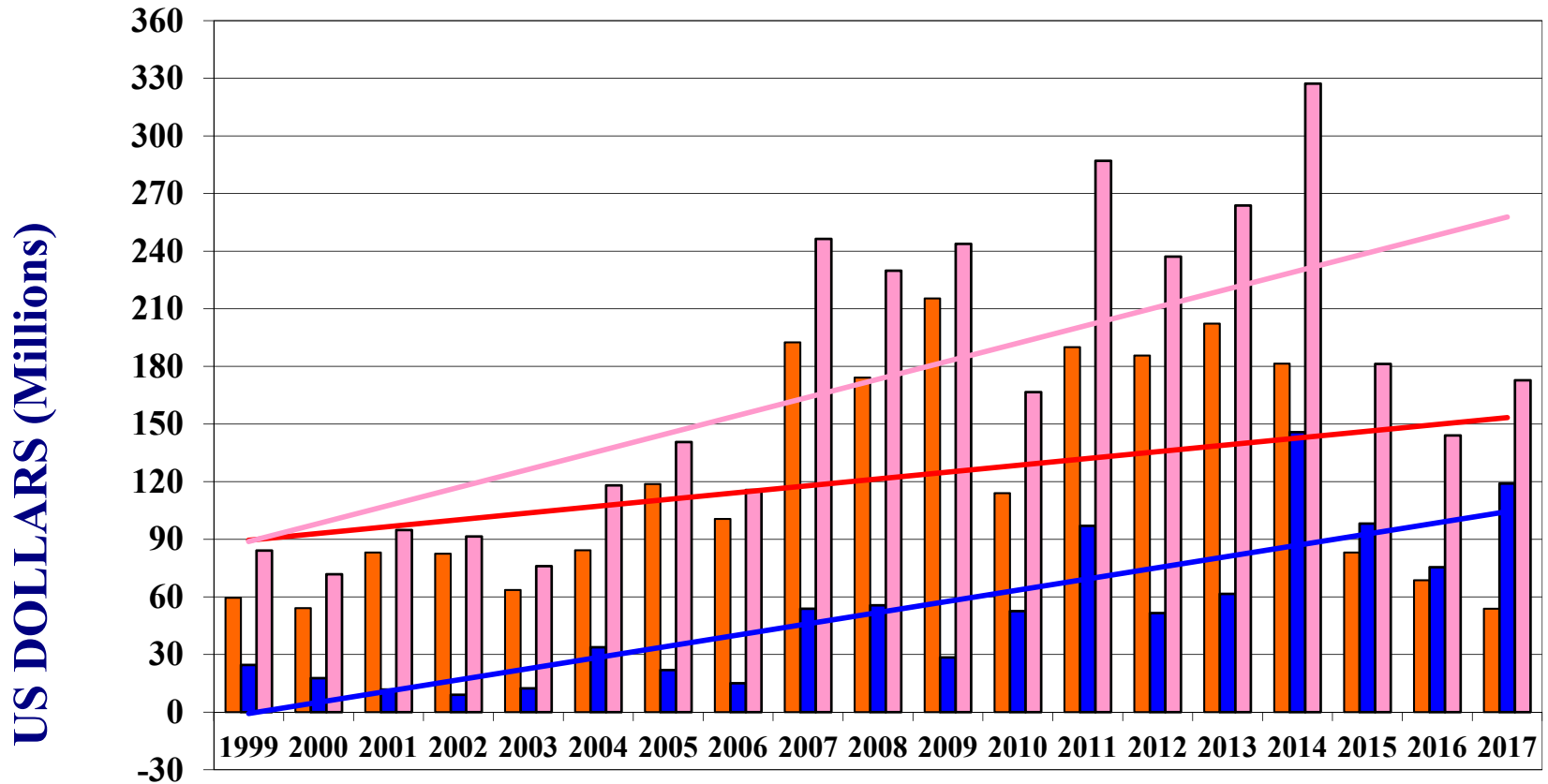
ISU Salvage Statistics; 1999 - 2017

LOF Salvaged Values & Average Salvaged Values



ISU Salvage Statistics; 1999 - 2017

Total "Dry" Salvage Revenue (exc. SCOPIC)

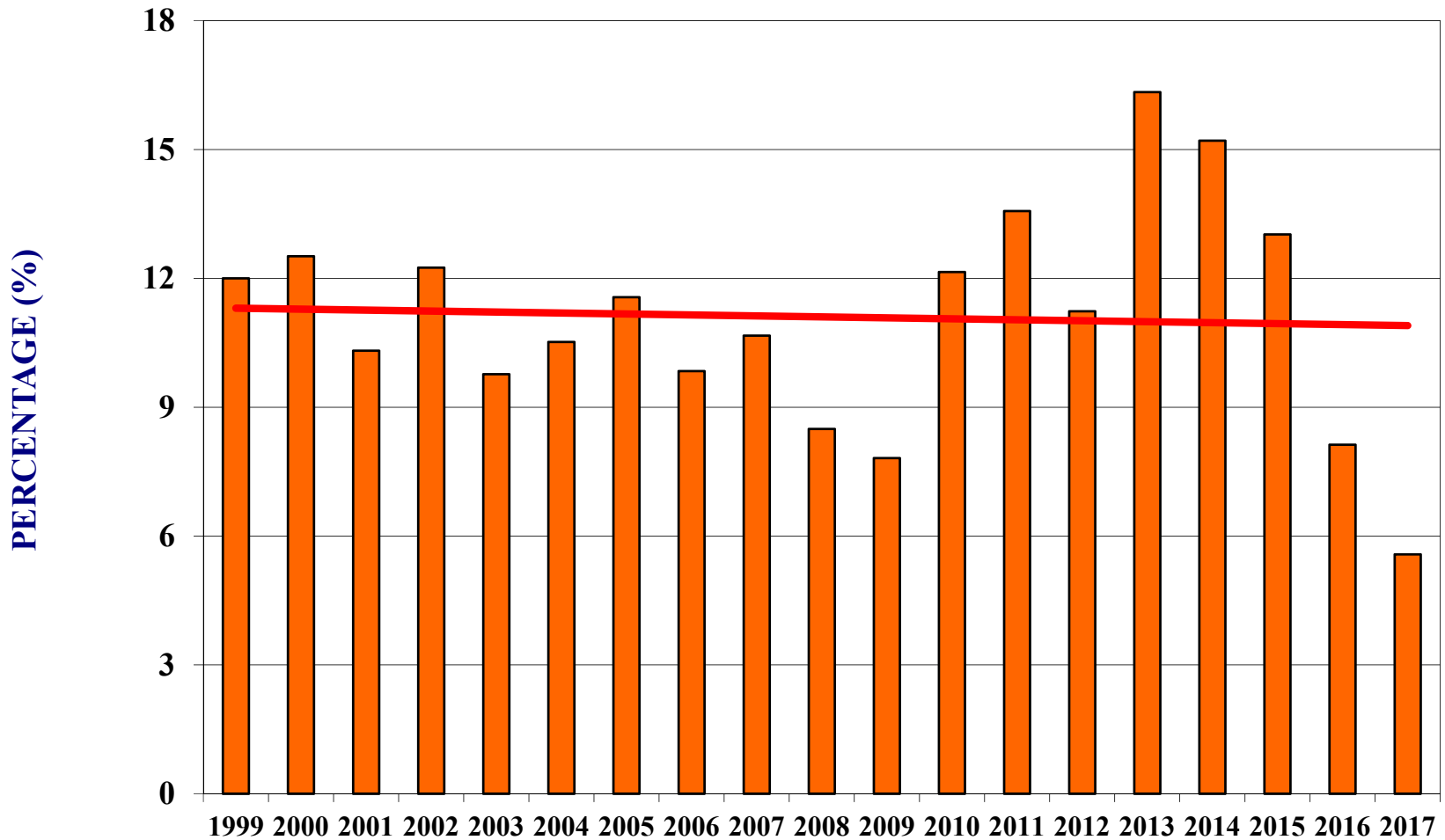


■ LOF REVENUE ■ NON LOF REVENUE ■ TOTAL REVENUE



ISU Salvage Statistics; 1999 - 2017

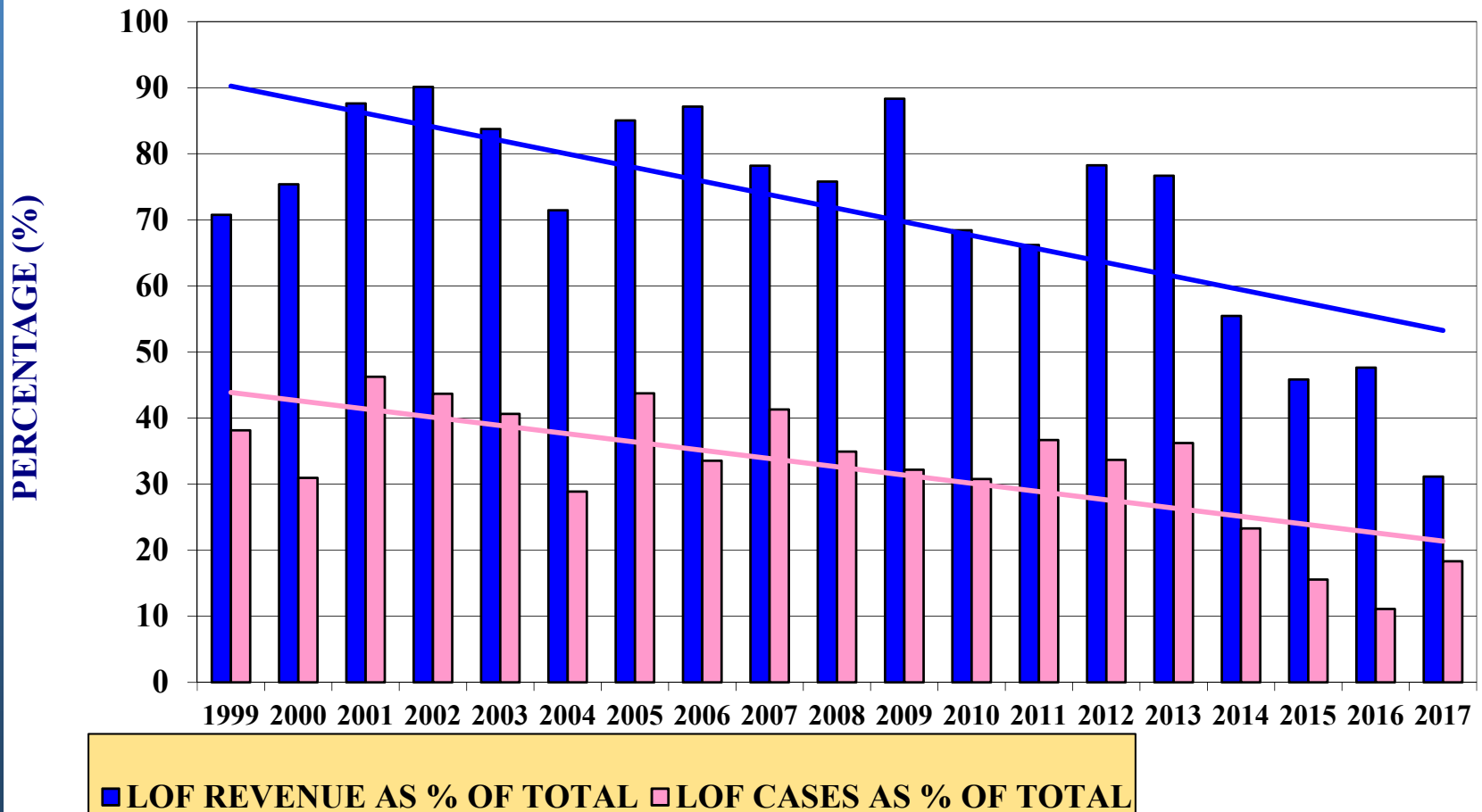
LOF Revenue as a Percentage of Salvaged Value



LOF PERCENTAGE



LOF as a Percentage of all “Dry” Salvage



ISU Salvage Statistics; 1999 - 2017

Wreck Removal Activity

